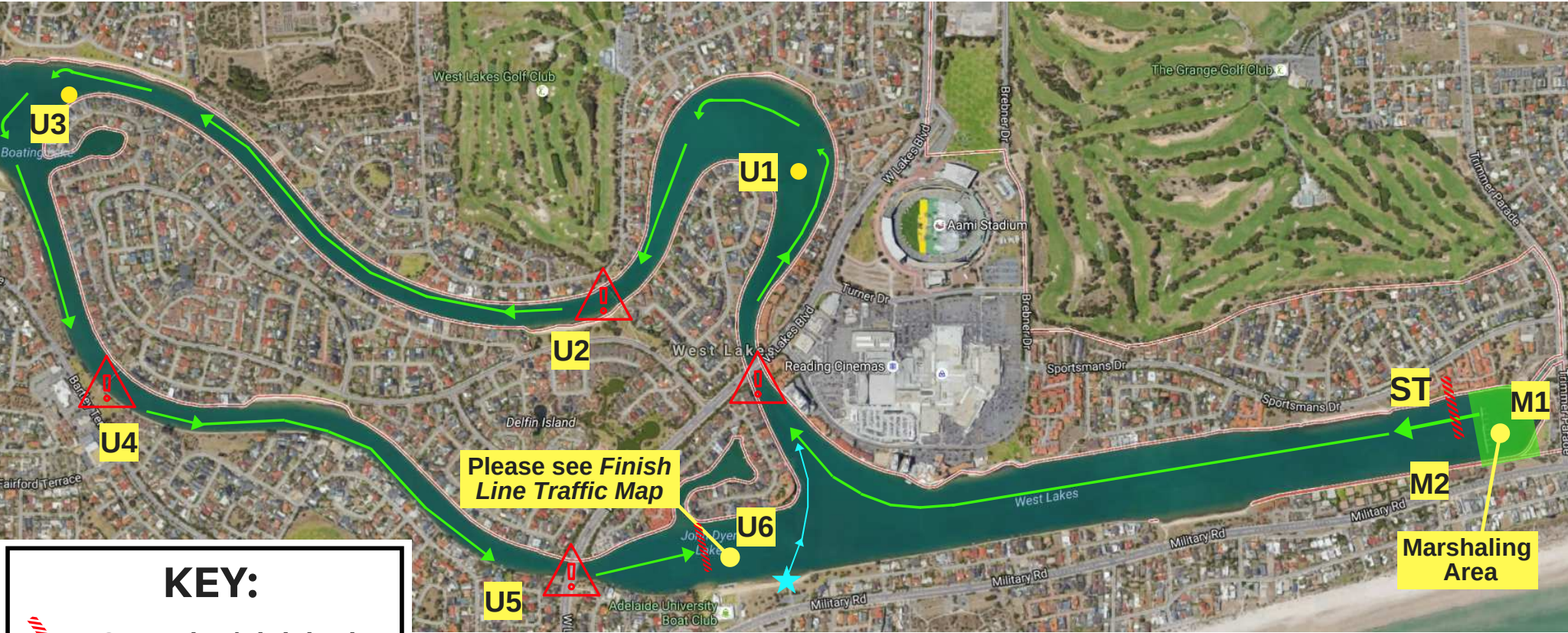







ROUND THE ISLAND COURSE MAP



KEY:

-  Start Line/Finish Line
-  Surf Boat Start Line
-  Turning Buoys
-  Bridges
-  Boat Race Officials

RULES & NOTES:

- Compulsory Coach, Stroke & Coxswains Briefing @ 8:00am outside Regatta Control
- Leading Crews have right of way at bridges.
- Slower Crews must give way to faster crews.
- ALL Crews must remain on the bow side of the Lake.
- ALL Crews must be vigilant of all other Lake users.
- Surf Boats will start from the southern end of Oarsman Reserve