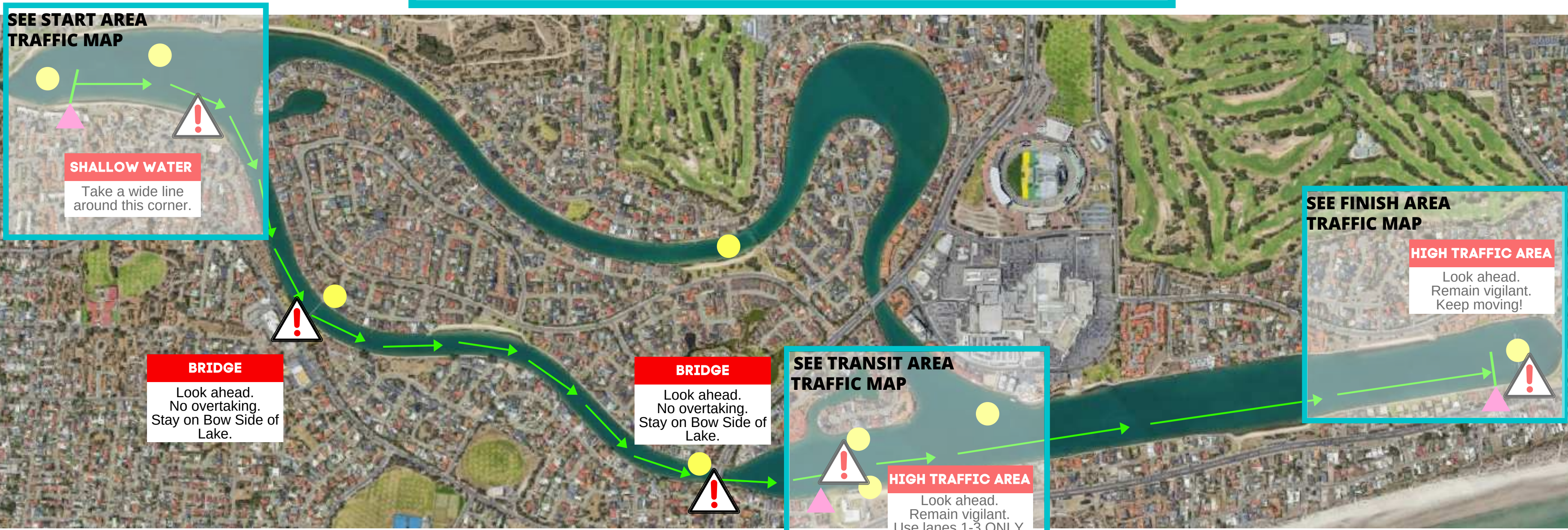


# 4.8KM TIME TRIAL REGATTA





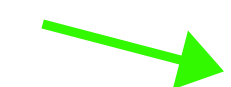

## RACING COURSE MAP



### RACING RULES & INSTRUCTIONS

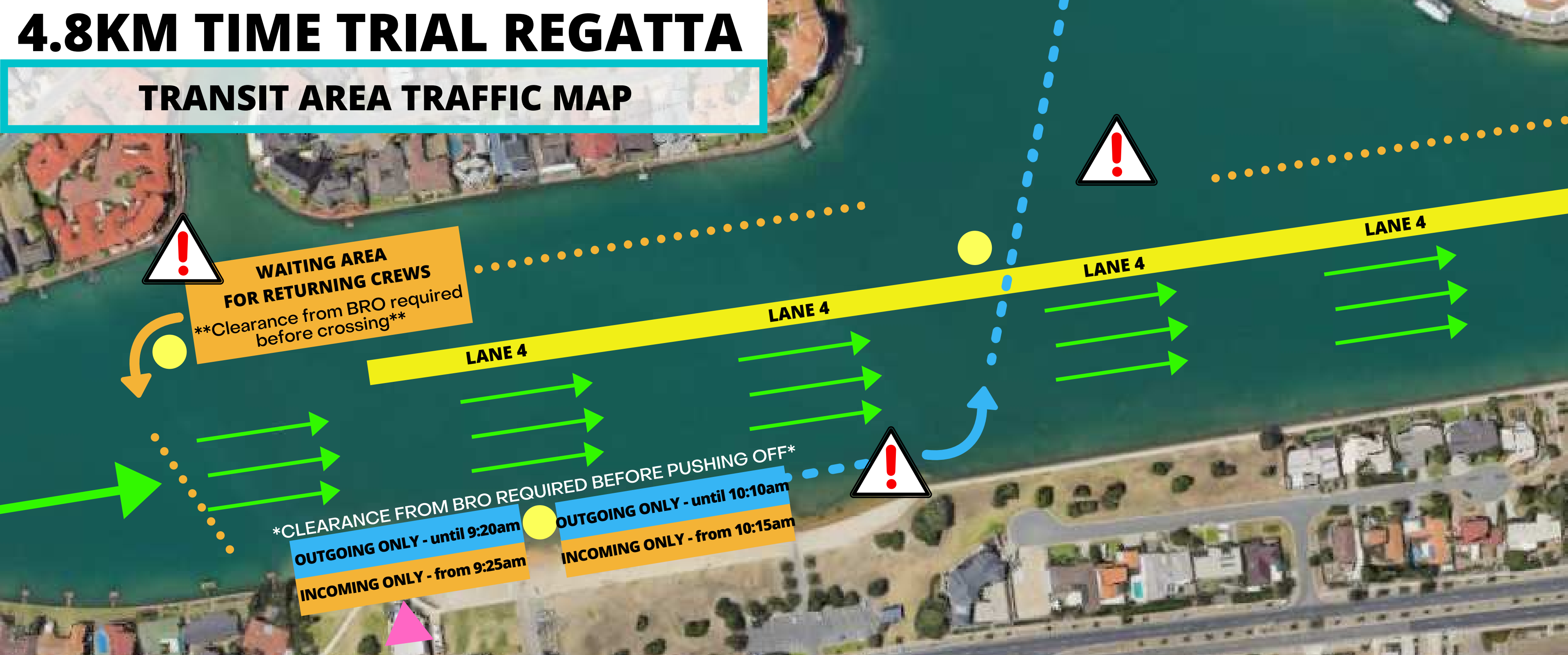
- The Time Trial has a running start.
- All crews must remain on the bow side of the Lake and must pass through the Western side of both bridges.
- Slower crews must give way to faster crews.
- Overtaking is not permitted at the bridges.
- Entering and once on the course crews must use lanes 1,2, or 3.
- There are several obstacles throughout course - a shallow corner, 2 bridges, 2 high traffic areas. See Above.
- Please also see **Transit Area, Start Area, Finish Area Traffic Maps** for further instructions.

### MAP KEY

-  **OFFICIALS**
-  **HAZARDS**
-  **TIMING POINT**
-  **OUTGOING CREWS**
-  **RACING CREWS**
-  **INCOMING CREWS**

# 4.8KM TIME TRIAL REGATTA

## TRANSIT AREA TRAFFIC MAP



### TRANSIT AREA INSTRUCTIONS - TRAVELLING TO START

- Launch your boat from designated 'outgoing' areas.
- Check for racing traffic and get clearance from BRO before pushing off.
- Move across the course quickly and look out for oncoming traffic.
- Proceed to the start via the back of the island, always staying on the bow side of the lake and being vigilant of other lake users.

### TRANSIT AREA INSTRUCTIONS - RACING

- **YOU MUST ENTER THE REGATTA COURSE IN LANE 1, 2, OR 3.**
- Do not enter in lane 4, 5, 6, 7, 8 and do not enter in the travelling lane.
- This will be a high traffic area you must remain vigilant of all other crews.

### TRANSIT AREA INSTRUCTIONS - RETURNING TO LAND

- Return from the finish line in Lane 5,6,7,8.
- Be mindful of traffic crossing the course in transit to the start line.
- Wait in the designated waiting area until it is clear to cross the racing course.
- Move quickly across the course and land immediately at one of the designated 'incoming' areas.
- Remove your boat quickly.

# 4.8KM TIME TRIAL REGATTA

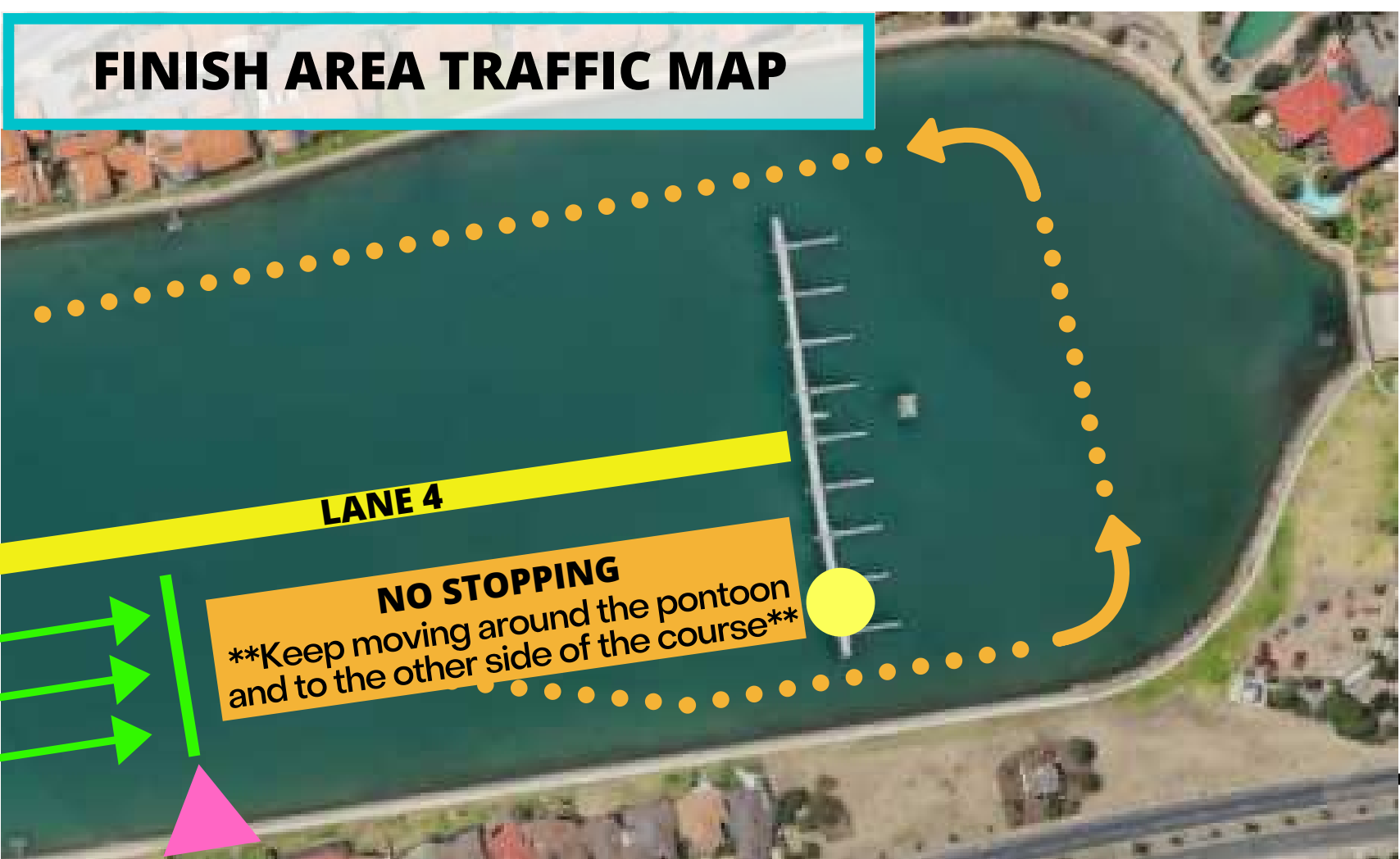
## START AREA TRAFFIC MAP



## START AREA INSTRUCTIONS

- Proceed to the start via the back of the island, always staying on the bow side of the lake and being vigilant of other lake users.
- Approach the marshaling area slowly and line up in order of bow number.
- Wait for the marshal to direct you to the starting area then row down and turn your boat.
- Wait for the starter to call you to start.
  
- **NOTE:** The Time Trial is a running start. You will have approximately 100m to get your boat up to speed before crossing the official start line.
  
- **NOTE:** The first corner is shallow - a wider line is recommended.

## FINISH AREA TRAFFIC MAP



## FINISH AREA INSTRUCTIONS

- Racing crews must use lanes 1-3 when on course - NOT THE TRAVELLING LANE.
- When approaching the finish line crews must be vigilant of other traffic past the finish line.
- When across the finish line DO NOT STOP ROWING. Proceed with caution around the back of the pontoon and around to the other side of the course.
- Return down the course via lanes 5-8 and be mindful of crews crossing the course in transit to the start line.
- See **Transit Area Map** for instructions on crossing the racing course.